

Gas Syringe

Kolbenprober

Georg-August-Universität Göttingen



Gas Syringe

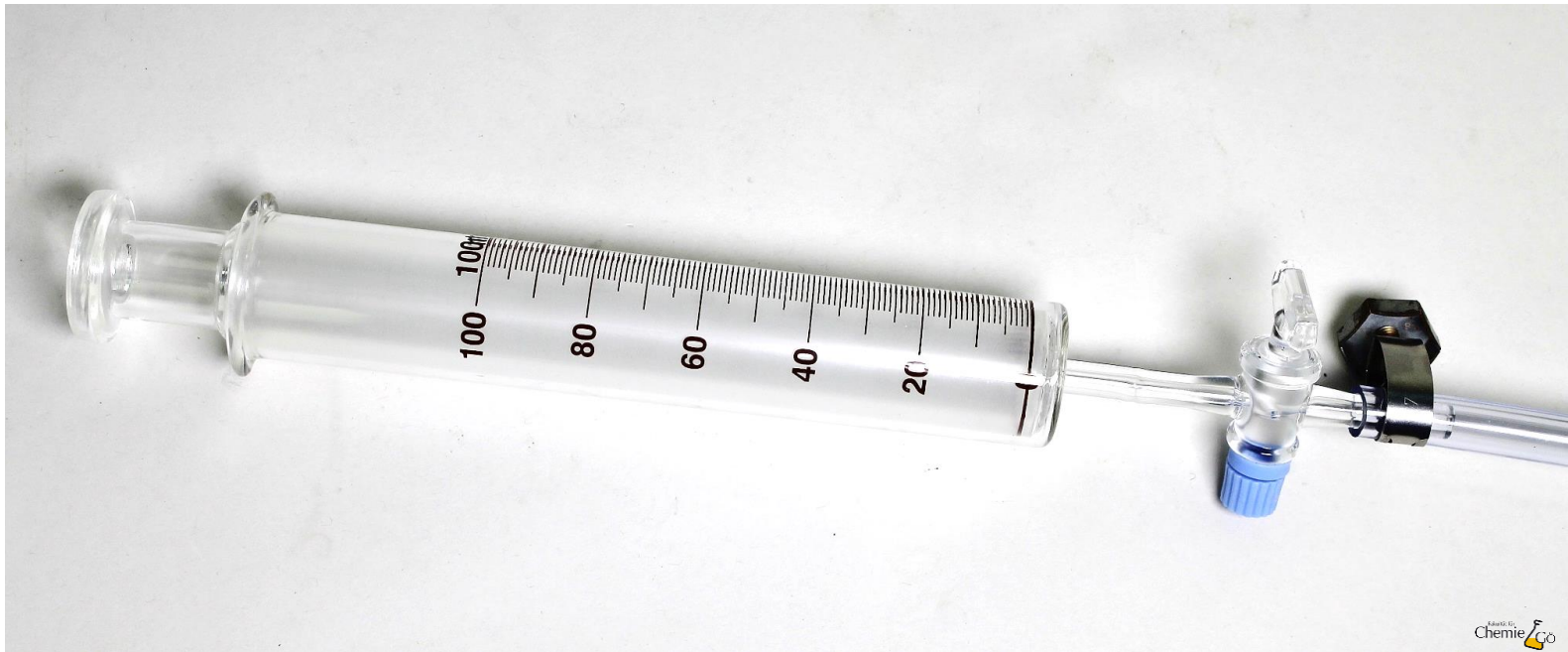
A gas syringe is used when handling gases (insert or withdraw) or to measure the volume of evolved gas.

The plunger can move freely in the syringe when the valve is open. To ensure this, it is important that the plunger is not damaged during transport.



The tip of the syringe is connected to the apparatus via gas tubing or pierced stoppers.

When the valve is open, gases can enter the syringe.



The volume of gas in the syringe can be determined via the mark on the plunger.

